

Baxter



Progressa ICU bed

Advancing mobility. Accelerating recovery.

The critical care environment is becoming more complex and demanding each year.



Advancing Recovery, Enhancing Lives

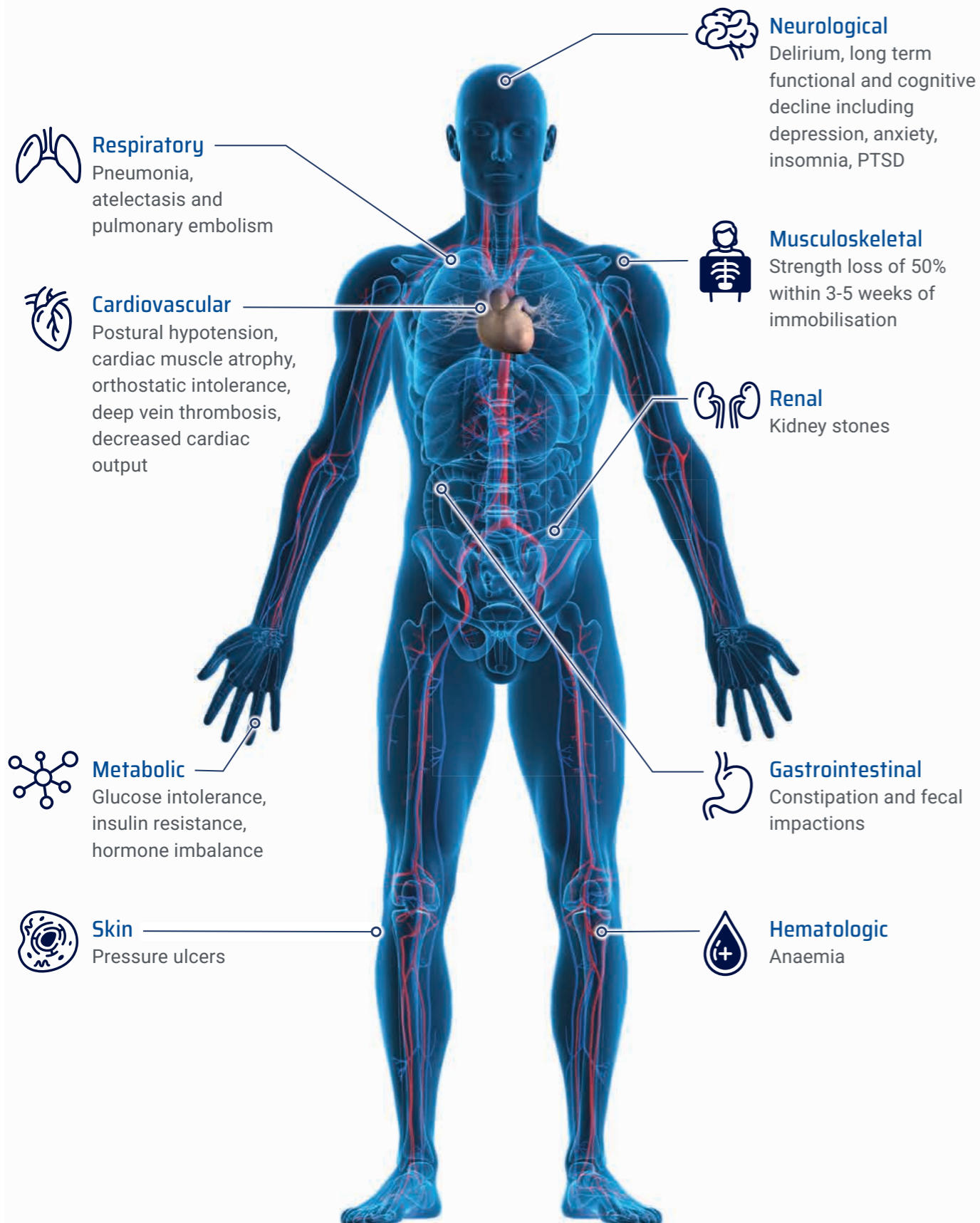
European ICUs are under growing strain from rising patient demand, staff shortages, and budget constraints. Demographic changes and increasingly complex care needs are stretching resources and intensifying workloads. These pressures threaten both staff wellbeing and the sustainability of high-quality care. Technology offers essential tools to optimize workflows, support teams, and improve outcomes. By embracing innovation, ICUs can build more resilient, efficient systems to advance recovery and enhance lives across Europe.^{1,2}



Progressa ICU Bed: Supporting Every Step Toward Recovery

In the ICU, every moment matters. Early mobility is a cornerstone of recovery – helping patients regain strength, reduce complications, and return to life sooner. The **Progressa** ICU bed is designed to support this journey, supporting safe, progressive mobilisation that aligns with evidence-based early mobility programs. With features that help ease caregiver workload and promote patient mobilisation, **Progressa** transforms the ICU bed into a platform for healing. By supporting recovery and patient care from day one, hospitals are empowered to offer more efficient, patient-centred care and improve outcomes when it matters most.

Potential Complications of Immobility^{3,4,5,6}



Survivors of critical illness often face severe muscle weakness and long-term physical disability – sometimes lasting five years – due to muscle wasting acquired in the ICU.



Breaking the Cycle of Weakness

Survivors of critical illness often experience severe muscle weakness and long-term disability—sometimes lasting up to five years—due to ICU-acquired muscle wasting. Evidence highlights that early mobility programs are essential to improving outcomes, reducing complications, and shortening ICU stays, while supporting patient-centred care.

The **Progressa** ICU bed is designed to support early mobility in intensive care units. With integrated features that enable progressive movement and assist caregivers, **Progressa** bed can support hospitals seeking to integrate evidence-based mobility protocols into their care practices focused on restoring strength sooner and improve efficiency. When mobility begins early, recovery begins stronger.

Early Mobility Works

- Early mobility has shown to Reduce complications and ICU-acquired weakness⁷
- Help Shorten ICU stay and ventilation duration⁷
- Improve long-term physical recovery and quality of life⁷

Progressa ICU Bed: Where Innovation Meets Movement

The **Mobility STEP** Protocol – Safely Transitioning Every Patient – empowers clinicians to help critically ill patients move from prone positioning to sitting, standing, and ultimately walking.

Progressa is designed to make these transitions smoother, supporting early mobility as part of everyday care. Our goal is to help you provide patient-focused care that promotes recovery and enhances quality of life.

Mobility STEP Protocol^{8,9}

(STEP - Safely Transitioning Every Patient)

INITIATE UPON ADMISSION - LEVEL 1



Level 1: STABILISE

Goal: Initiate mobility

Assess patient mobility; Bedside Mobility Assessment tool (BMAT) "Sit and Shake."
Begin patient appropriate activities.

- Maintain HOB $\geq 30^\circ$.
- q2hr turning (self) or assisted with Safe Patient Handling (SPH) equipment.
- Continuous lateral rotation (CLR) for 18 hours each day.
- Passive or Active Range of Motion (PROM/AROM) 3x/day; utilise SPH equipment; encourage family involvement.
- Reverse Trendelenburg/Tilt Table 3x/day. Minimum 15 minutes at least once per day.
 - Perform lower extremity exercises with retracting footboard.
 - Perform in-bed squats.
- Calf/Ankle pumps.

Move to Level 2 when the patient ...

- Has acceptable oxygenation/haemodynamics.
- Tolerates q2hr turning.
- Tolerates HOB $>30^\circ$ or Reverse Trendelenburg.
- Passes BMAT "Sit & Shake."

If indicated and prescribed, place patients in prone position to improve oxygenation. Utilise SPH equipment. Refer to your local guidelines or policies.

PROGRESS TO LEVEL 2



Level 2: SIT

Goal: Tolerate upright position

- Continue patient appropriate activities from previous level(s).
- Assess patient mobility; BMAT "Stretch and Point."
- **FullChair** position (footboard on) or up to bedside chair with SPH equipment; 3x/day.
- Sit at edge of bed as tolerated.
- Physical therapist (PT) consultation.

Move to Level 3 when the patient ...

- Tolerates active-assistive exercises 2 times/day.
- Tolerates lower extremity exercises against footboard/Reverse Trendelenburg.
- Tolerates **FullChair** position or up in bedside chair 3x/day.
- Passes BMAT "Stretch and Point."

PROGRESS TO LEVEL 3



Level 3: STAND

Goal: Progress to standing

- Continue patient appropriate activities from previous level(s).
- Assess patient mobility; BMAT "Stand."
- Stand attempts 3x/day, use a sit-to-stand if patient unable to support self for 1 minute.
- Pivot to chair if patient tolerates partial weight-bearing.
- PT/ Occupational Therapy (OT) actively involved.

Move to Level 4 when the patient ...

- Tolerates increasing active exercises.
- Tolerates full weight bearing.
- Tolerates standing for up to 1 minute.
- Passes BMAT "Stand."

PROGRESS TO LEVEL 4



Level 4: STEP

Goal: Progress to walking

- Continue patient appropriate activities from previous level(s).
- Assess patient mobility; BMAT "Step."
- Step and march patient in place 3x/day.
- Patient transfers to chair with standby assist.
- PT/OT actively involved.

Move to Level 5 when the patient ...

- Can successfully perform all activities.
- Stand and pivots to chair.
- Passes BMAT: "Step."

PROGRESS TO LEVEL 5



Level 5: STRENGTHEN & SUSTAIN

Goal: Strengthen - Advance Mobility

- Continue patient appropriate activities from previous level(s).
- Ambulate 3x/day. Utilise SPH equipment for safety if necessary.
- Continue to progress mobility through all transitions in care.
- PT/OT – advance mobility goals.
- Continue to strengthen and progress through discharge.

END PROTOCOL



Progressa ICU Bed: When mobility begins early, recovery begins stronger

The **Progressa** Bed System, developed in collaboration with nurses, physicians and therapists, responds to the evolving needs of caregivers, patients and healthcare facilities and supports the implementation of Early mobility programs such as the STEP protocol.

With the help of the **Progressa** ICU bed integrated functionality and lift system, caregivers can deliver evidence-based therapies and help implement and support early mobility programs.¹⁰

More than just a bed, the **Progressa** Bed System is a therapeutic device that acts as a seamless extension of the health care team.

KEEP PROGRESSING. KEEP MOVING. TRANSFORM CARE TODAY.

Progressa isn't just a bed – it's a partner in helping making early mobility programs a reality.

Ready to take the next step? Visit KnowledgeBox for practical tools and expert guidance that help you turn evidence into action. Inside, you'll find:

- Expert insights from mobility champions and ICU leaders
- Clinical guidelines to implement evidence-based protocols
- Real-world success stories from multidisciplinary teams

Your next step toward safe smarter care starts here.

Explore KnowledgeBox today and unlock resources that move patients, and your practice, forward.

KnowledgeBox



Confidence in every move. Innovative Bed technology to support safe and smart care



IntelliDrive Transport System
A single caregiver can easily and safely transport the bed with precise stop and turn controls.



HandsFree CPR Control
Foot-operated control lowers the head and knee sections, and raises the foot section in one step.



Graphical Caregiver Interface (GCI)
For enhanced caregiver ergonomics, hinged GCI can be pre-programmed or customised to adjust therapies.



Head-Of-Bed (HOB) Alert
Sends alert when HOB angle drops below 30° or 45°.



Side Exit Assist and Chair Egress functions
With Chair Egress and Side Exit functions, caregivers can seat and exit patients in one smooth motion – just one touch.



3-Mode Bed Exit Alert
For patient safety, 3 levels of sensitivity depending on patient's condition.



Proning accessory
Provides access to the patient's face while the adjustable mirror offers caregivers added visibility.



Wireless Bed Connectivity
DeviceBridge middleware from Baxter allows for seamless bed and surface integration into third party devices, and your hospital EMR.

StayInPlace Technology

Exclusive to the Progressa ICU bed

Keep Patients in Position. Help Protect Caregivers.

StayInPlace is a breakthrough innovation designed to prevent patient migration as the Head-of-Bed angle changes – minimising the need for frequent repositioning.



Dynamic Response

The bed frame and surface lengthen as the head rises, keeping patients comfortably in place.



Caregiver Relief

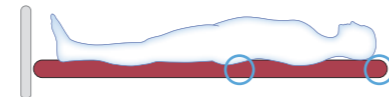
Can help Reduce lift burden, helping prevent back injuries and saving valuable nursing hours.



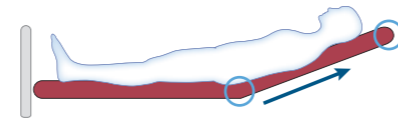
Patient Safety

Less repositioning means less discomfort and a less friction and shear

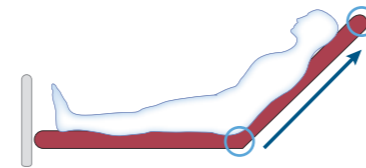
Without StayInPlace technology, raising the Head-of-Bed can push patients toward the foot end, increasing strain and risk. With StayInPlace technology, Progressa ICU bed adapts to the patient – helping deliver comfort, safety, and efficiency in one smart solution.



StayInPlace technology is not activated while the patient is in a prone position.



As the head of the bed is elevated, StayInPlace technology increases the surface area under the patient's upper body.



StayInPlace technology extends the head section of the frame and surface in unison to accommodate the natural elongation of the body as the patient sits up.

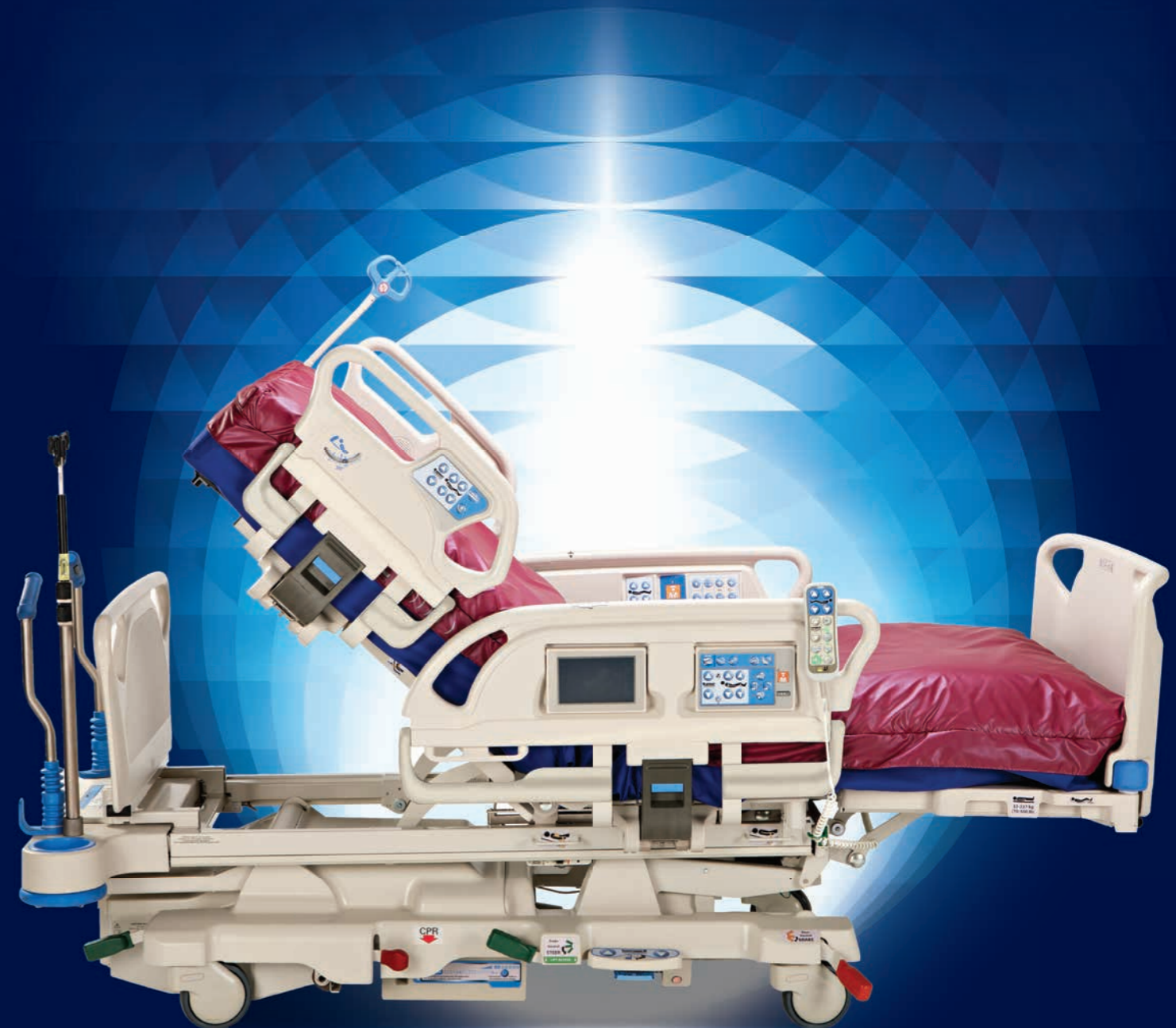


Transform ICU Care Today.

Learn how Progressa ICU bed can help you redefine patient outcomes and elevate your ICU experience – contact us now to start the journey.

Designed in collaboration with caregivers, the Progressa Bed System supports early mobility activities and helps caregivers comply with safety protocols. Gives care teams tools to help enhance patient safety, extend seamless connectivity and improve efficiency.

Smart beds, seamlessly integrated to the healthcare system, have a unique opportunity in enabling more efficient efforts for caregivers, and more responsive environments for patients.¹¹



For more information please contact
your local Baxter representative.

References

1. Azoulay E, Cecconi M, De Waele JJ. *Lancet Respir Med.* 2024.
2. Cecconi M, Spes CD, Moreno R. *Intensive Care Med.* 2023.
3. Winkelman Chris: *Bed Rest in Health and Critical Illness, 2009 - Volume 20, Number 3, pp.254–266*
4. Knight J, et al. *Nurs Times.* 2009;105(21):16-20.
5. Knight J, et al. *Nurs Times.* 2009;105(22):24-27
6. Nigam Y, et al. *Nurs Times.* 2009;105(23):18-22.
7. *BMJ* 2025;388:e077292. Clinical Review State of the Art Review. Intensive care unit acquired weakness and physical rehabilitation in the ICU
8. Schallom M, Tymkew H, Vyers K, et al. Implementation of an interdisciplinary AACN early mobility protocol. *Critical Care Nurse.* 2020;40(4):e7-e17. doi: 10.4037/ccn2020632
9. Gartley, C. E. (2020, July 2). The Bedside Mobility Assessment Tool 2.0. *American Nurse.* <https://www.myamericannurse.com/the-bedside-mobility-assessment-tool-2-0/>
10. Suzuki.G. et al. Early mobilization using a mobile lift in the ICU (REF-43280)
11. Ghersi, I., Mariño, M., & Miralles, M. T. (2018). Smart medical beds in patient-care environments of the twenty-first century: A state-of-art survey. *BMC Medical Informatics and Decision Making*, 18, 63. <https://doi.org/10.1186/s12911-018-0643-5> (REF-40459)

The Hillrom Progressa ICU bed is intended to be used to treat or prevent pulmonary or other complications associated with immobility; to treat or prevent pressure ulcers; or for any other use where medical benefits may be derived from either Continuous Lateral Rotation Therapy or Percussion/Vibration Therapy. Medical Device (93/42/EEC): Class IIa.

Manufacturer: Hill-Rom, Inc., 1069 State Route 46 East, Batesville, Indiana, USA 47006. EC Rep.: Hill-Rom S.A.S., Z.I. du Talhouët, 56330 Pluvigner, France.

This medical device is a regulated health product which, pursuant to such regulation bears a CE mark. Carefully read the detailed instructions for safe and proper use included in the documents accompanying the medical devices. The personnel of healthcare establishments are responsible for the proper use and maintenance of these medical devices.

Hillrom.Baxter.eu

Hill-Rom S.A.S.

Z.I. du Talhouët, 56330 Pluvigner, France

Baxter, DeviceBridge, FullChair, Graphical Caregiver Interface (GCI), HandsFree, Hillrom, IntelliDrive, Mobility STEP, Progressa and StayInPlace are trademarks of Baxter International Inc. or its subsidiaries.

EMA-CS157-260001 (v1.0) 01/2026